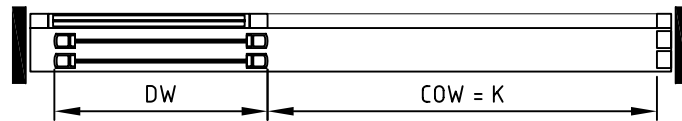
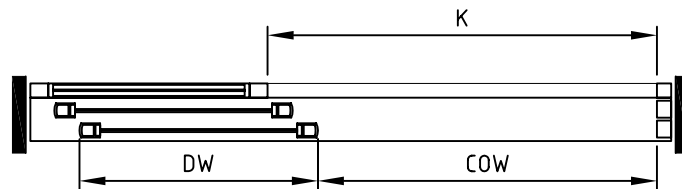


Alt. 1



Alt. 2



- COCL= Center of opening from cover left side
- COW = Clear opening width
Recom. (SBL-2xLAP-100)/1,5
Min. 1000, max. (SBL-2xLAP-G)/1,5
- CL = Cover length incl 2x30 mm end plates
Recom. (1,5xCOW) + (2xLAP) + 100 + (2X30)
Min. (1,5xCOW) + (2xLAP) + 60
- DH = Door leaf height
- SBL = Support beam length
Recom. (1,5xCOW) + (2xLAP) + 100
Min. (1,5xCOW) + (2xLAP), Max. 6100
- LAP = Overlapping
- G= Space between closed door leaves
- DW= Door width (If door adaptor state DW)
- K= Clear opening width, fixed screens

State when ordering

- UniScan Yes
- COCL=.....mm
- COW=.....mm
- Cover Yes
- CL=.....mm
- SBL=.....mm
- LAP=.....mm
- If not stated LAP = 20*
- G=.....mm
- If not stated G = 0*
- DW=.....mm

Surface treatment

- Silver anodized
- Special anodized.....
- RAL.....

Project No.....
 Sign/Date.....

UniSlide-1 L shown

Sliding door operator
 UniSlide T - 1 R/L

Article No. 500340



D

833084