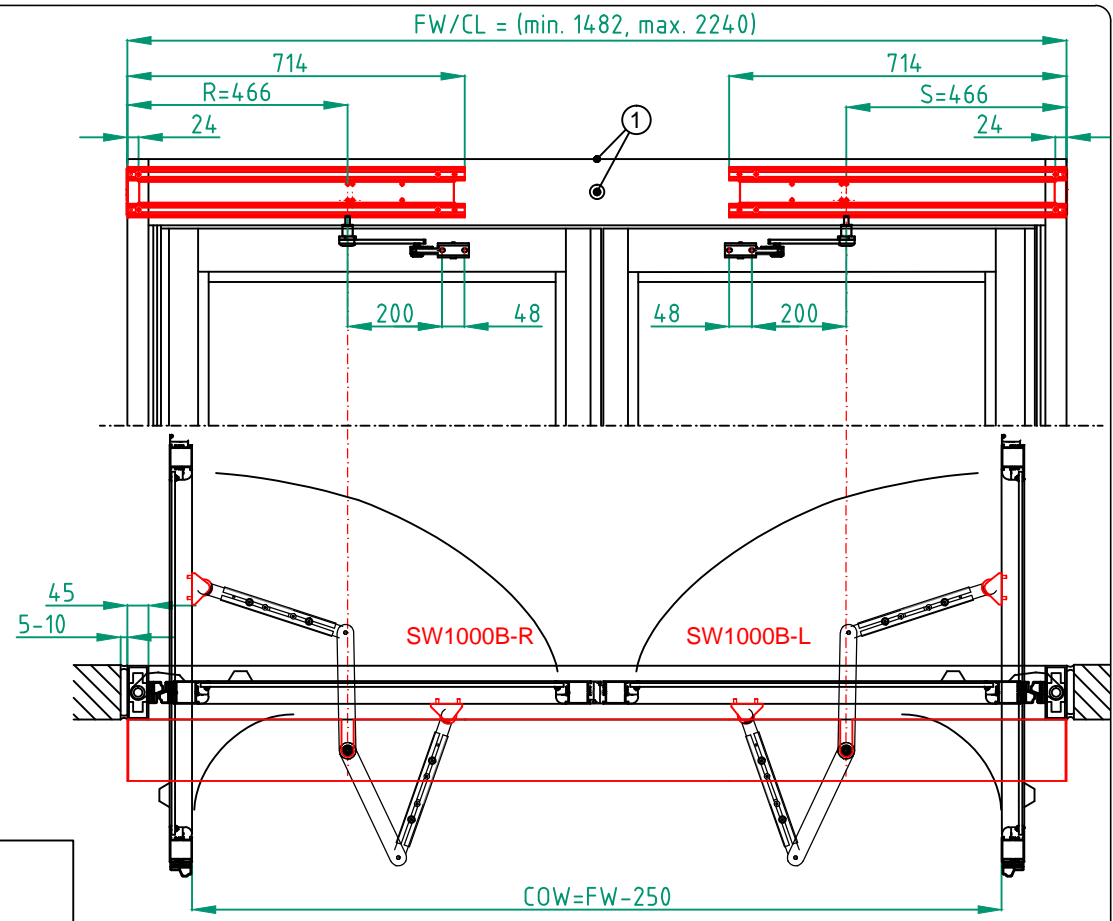
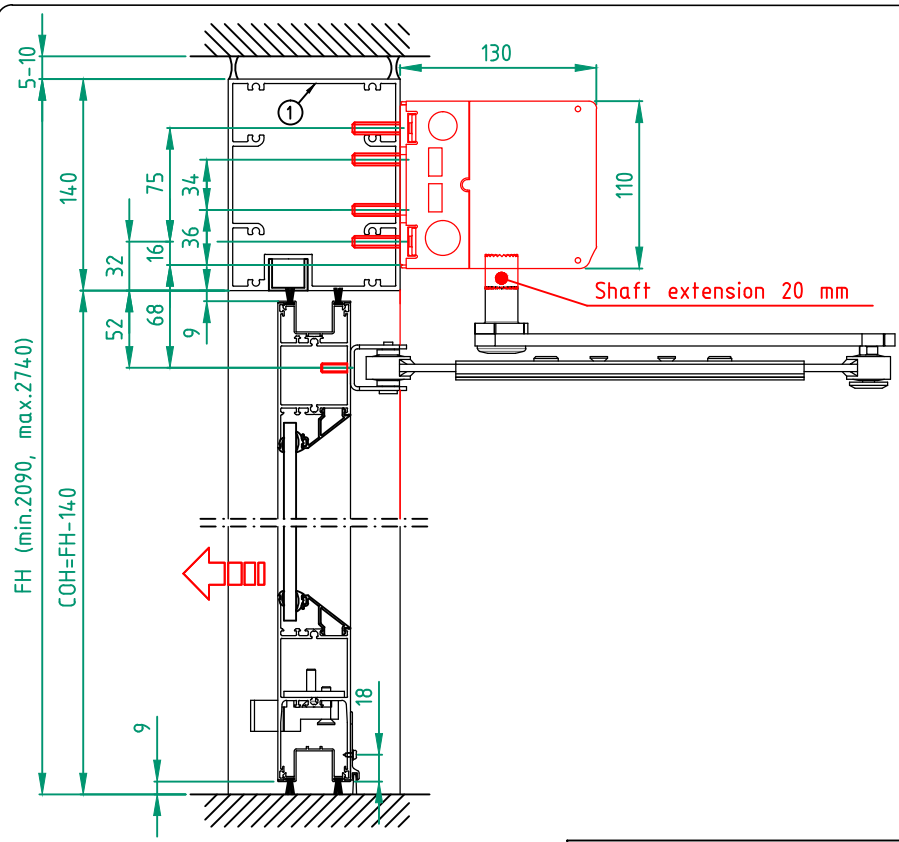


All rights in and to this material are the sole property of ASSA ABLOY Entrance Systems AB. Copying, scanning, alterations or modifications are expressly forbidden without the prior written consent of the applicable company within ASSA ABLOY Entrance Systems AB. Rights reserved for changes without prior notice.



STATE WHEN ORDERING

FW/CL = mm
 FH = mm
 COW = mm
 COH = mm

Surface treatment

Silver anodized
 Special anodized
 RAL
 Special powder coating

- Options see layers:
- Handle outside, 950 mm height
 - Top rail 175 (if door mounted sensor)
 - Midrail 70, MH = mm
 - Midrail 150, MH = mm
 - Bottom rail 201
 - Lock LELME (BDS-R)
 - Lock LESPAGN (BDS-L)
 - Lock LFLUSH (BDS-L)
 - SW100, PUSH

SW100 to be installed as pulling and arm dip switch setting to be PULL

Glass, see layers:

- 6 mm laminated glass
- 6 mm tempered glass
- 8 mm laminated glass
- 8 mm tempered glass
- 22 mm insulated glass

① Cable inlet

Customer: _____
 Door id: _____
 Project No: _____

Ref: _____
 Date: _____
 Sign: _____

Balance door system Besam SW1000B-2
Swing door operator Besam SW100
Arm system PUSH

ASSA ABLOY
 5.0 1011812-EI